

Storm Randers Masters 2016



Oil Pattern Distance:	40 Feet	Reverse Brush Drop:	33 Feet	Oil Per Board:	45 uL
Forward Oil Total:	17.595 mL	Reverse Oil Total:	8.235 mL	Volume Oil Total:	25.83 mL
Forward Boards Crossed:	391 Boards	Reverse Boards Crossed:	183 Boards	Total Boards Crossed:	574 Boards

	Start	Stop	Loads	Speed	Crossed	Start	End	Feet	T.Oil
1	2L	2R	4	10	148	0.0	4.2	4.2	6660
2	2L	5R	1	14	34	4.2	6.1	1.9	1530
3	6L	6R	2	14	58	6.1	10.0	3.9	2610
4	8L	8R	2	14	50	10.0	13.9	3.9	2250
5	9L	9R	2	14	46	13.9	17.8	3.9	2070
6	11L	11R	2	14	38	17.8	21.7	3.9	1710
7	12L	12R	1	14	17	21.7	23.6	1.9	765
8	2L	2R	0	18	0	23.6	30.0	6.4	0
9	2L	2R	0	22	0	30.0	35.0	5.0	0
10	2L	2R	0	26	0	35.0	40.0	5.0	0

Navigation: Forward Reverse More

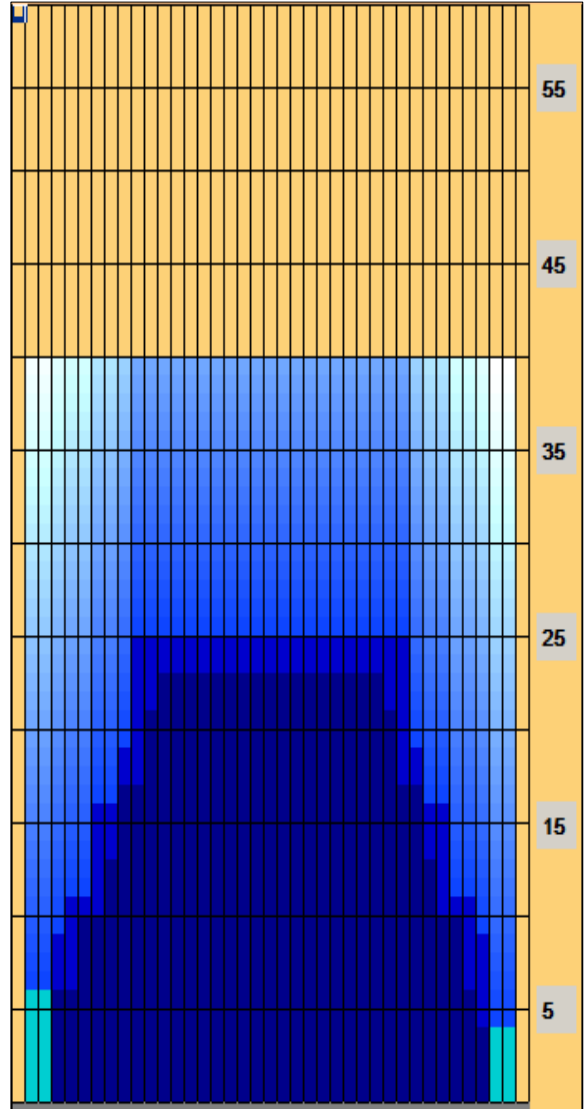
	Start	Stop	Loads	Speed	Crossed	Start	End	Feet	T.Oil
1	2L	2R	0	30	0	40.0	25.0	-15.0	0
2	10L	10R	2	22	42	25.0	18.8	-6.2	1890
3	9L	9R	1	18	23	18.8	16.3	-2.5	1035
4	7L	7R	2	18	54	16.3	11.2	-5.1	2430
5	5L	5R	1	14	31	11.2	9.3	-1.9	1395
6	4L	4R	1	14	33	9.3	7.4	-1.9	1485
7	2L	2R	0	14	0	7.4	0.0	-7.4	0

Navigation: Forward Reverse More

Conditioner:
Type In or Select One

TransferType:
Type In or Select One

- Forward
- Reverse
- Combined
- Buff



Item	3L-7L:18L-18R	8L-12L:18L-18R	13L-17L:18L-18R	18L-18R:17R-13R	18L-18R:12R-8R	18L-18R:7R-3R
Description	Outside Track:Middle	Middle Track:Middle	Inside Track:Middle	Middle:Inside Track	Middle:Middle Track	Middle:Outside Track
Track Zone Ratio	2.76	1.19	1	1	1.19	2.92

